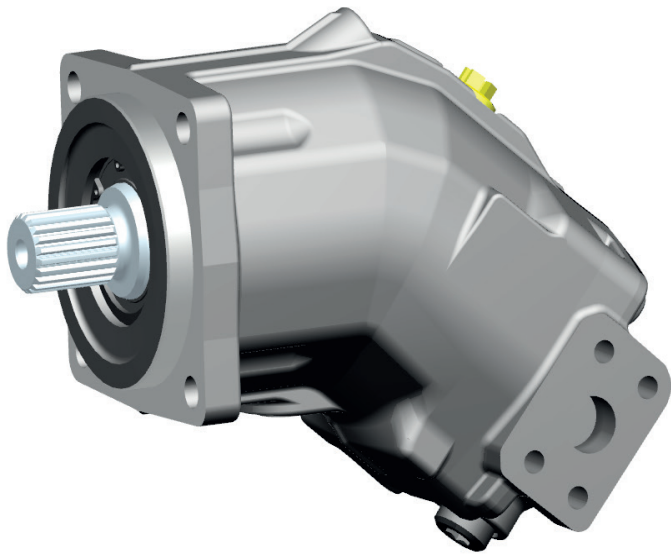


CMF

Fixed displacement Bent axis motor

Linde Hydraulics

Linde

With the next generation of the bent axis motors, Linde Hydraulics expands its customer oriented portfolio of high-quality components for hydraulic systems.

The fixed displacement motor CMF is characterized by its high external load and speed capacity. Due to its standardized interfaces, e.g. the plug-in flange according to ISO, the CMF fits a high variety of applications, without the need of adaptors.

Low windage losses in combination with the low weight of the motor support the cost-effective operation of the application.

Advantages

- >> high power density
- >> high speeds
- >> low windage losses

Design features

- >> fixed displacement bent axis motor
- >> standardized interfaces
- >> speed sensor optional

General technical data

Nominal size			80
Displacement		cc/rev	80
Speed	Maximum operating speed	rev/min	4500
	Maximum speed ¹	rev/min	5000
Pressure	Nominal pressure	bar	450
	Maximum pressure ²	bar	500
	Maximum housing pressure	bar	2.5
Torque (theoretical)	Output torque at $\Delta p = 430$ bar	Nm	537
Corner power		kW	258
Weight (without oil) approx.		kg	23.0

¹ highest transient speed, that can temporarily occur

² highest transient pressure, that can temporarily occur

CMF

Fixed displacement Bent axis motor

Linde Hydraulics

Customer interfaces

Shafts

>> **ANSI** B92.1 – 1970 SAE 16/32, 21 T

>> **DIN** 5480 – W40x2x30x18x9g

>> More shafts upon request

Flanges

>> **ISO** 3019 – 1/127 – 4
(SAE J744; SAE C)

>> **ISO** 3019 – 2 - 140B4HL

>> **Plug-in ISO** 3019 – 2/190 – 2

>> More flanges upon request

Ports

>> **Work ports** ISO 6162 – 2

- Side Ports

- Twin Ports

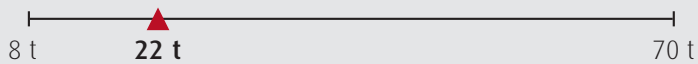
>> **Threaded ports** ISO 6149 – 1

>> More ports upon request

Application examples



Category

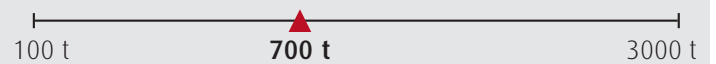


Equipment

- A** 2 x HPV 135-02 E1
- B** 1 x HPR 75-02 LP
- C** 1 x VW14M3
- D** 1 x HMV 280-02 E1
- E** 1 x CMF 80



Category



Equipment

- A** 2 x HPR 210-02
- B** 1 x VT8
- C** 1 x CMF 80
- D** 1 x HMR 135-02

Linde Hydraulics GmbH & Co. KG
Wailandtstraße 13
63741 Aschaffenburg
Fon +49 6021 150 00
Email info@linde-hydraulics.com
Web <http://www.linde-hydraulics.com>